

# gasprofi 1 <sup>SCS</sup> micro



Safety Laboratory  
Gas Burner





# The smallest professional among the laboratory gas burners!

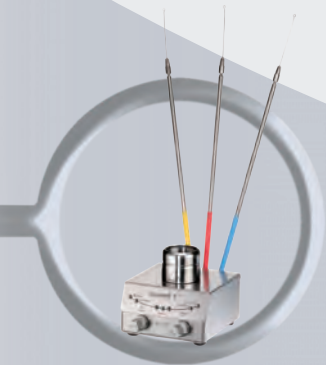
## The Gasprofi 1 SCS micro - Series.



Button function



DoubleClick  
IR-Sensor



Holding device for  
inoculation loop holders

**Gasprofi 1 SCS micro - Series: Safety and comfort in the smallest possible space. Optimal for all flame-related applications in the laboratory.**

### Simply safe to operate

Depending on the model, the Gasprofi 1 SCS micro - Series can be operated with touch free IR-Sensor, button function or foot pedal. With the DualKnob for adjusting gas and air flow, the flame can be precisely regulated.

### More room to work

The Gasprofi 1 SCS micro - Series is extremely space-saving. This allows nearly effortless work as a result of its extraordinarily low working height.

### Outstanding safety

The Safety Control System SCS® demonstrates state-of-the-art safety technology which constantly analyzes potential hazards and, if necessary, initiates safety measures, such as an interruption of the gas supply.

### Robust

All external components are made of stainless steel; this guarantees the greatest possible working sterility. The **removable burner head can simply be dismantled into its individual components for in-depth cleaning.**

Clogging is no longer a problem. Spilled liquids flow out through an integrated drain, and solid substances can be easily removed by opening the burner shaft.

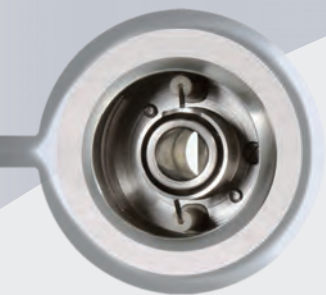
### Universal

The Gasprofi 1 SCS micro - Series can be operated with stationary natural gas and propane / butane gas supplies, cartridge gas or gas cylinders.

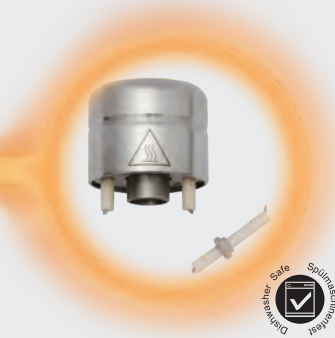
### Environment-conscious

Excellent energy efficiency in accordance with the most recent standards reduces gas and power consumption. This increases the burning time when gas cartridges are used.

**Gasprofi 1 SCS micro - Series: Ideal for use in cleanroom workbenches and laboratories**



Burner shaft can be opened  
at the flick of a wrist for  
cleaning purposes



Removable & decomposable  
burner head, autoclavable,  
completely made of  
stainless steel and ceramics

# gasprofi 1<sup>SCS</sup> *micro* school edition

## For optimal safety in modern schools

Bunsen burners were standard equipment in schools for many years but they were the cause of many accidents and fires.

### Gasprofi 1 SCS micro school edition changes all this!

A safe gas burner for sterilizing, heating and other flame related applications.

### Excellent safety due to the Safety Control System SCS®

The flame is re-ignited automatically if it goes out inadvertently. For example, if the flame is extinguished due to over-boiling of liquids and cannot be re-ignited, the burner automatically shuts the gas supply off for safety.

### Easy operation

Switch flame on and off at the touch of a button. Optionally, the Gasprofi 1 SCS micro school edition can also be operated by a foot pedal\* or an external DoubleClick IR-Sensor\*.

\* optional



	gasprofi 1 <sup>SCS</sup> micro school edition	gasprofi 1 <sup>SCS</sup> micro
<b>Programs</b>		
Button function	✓	✓
Pedal Standard	✓	✓
Pedal Start-Stop		✓
Sensor Auto-Off & Start-Stop		✓
<b>Safety Control System SCS®</b>	✓	✓
Residual heat display		✓
Burner Head Control BHC		✓
<b>Foot pedal included</b>		✓
<b>DoubleClick IR-Sensor</b>		✓
<b>Gas inlet filter</b>	✓	✓
<b>Removable &amp; decomposable burner head</b>	✓	✓
<b>Housing, burner head, gas connection &amp; controls made of stainless steel</b>	✓	✓
<b>DVGW approved</b>	✓	✓

### Programs

Button function  
Pedal Standard  
Pedal Start-Stop  
Sensor Auto-Off & Start-Stop

### Safety Control System SCS®

Residual heat display  
Burner Head Control BHC

### Foot pedal included

### DoubleClick IR-Sensor

### Gas inlet filter

### Removable & decomposable burner head

### Housing, burner head, gas connection & controls made of stainless steel

### DVGW approved



# gasprofi 1<sup>SCS</sup> *micro*

## Multi-Use

The Gasprofi 1 SCS micro can be operated with touch free IR-Sensor, button function or foot pedal. For all options, different programs exist that have been developed from practical experience: flexible start-stop functions, continuous application for up to 60 minutes or programs for short flame sterilization – exact to the second.

## Innovative - The DoubleClick IR-Sensor

This safety function ensures that the burner can only be ignited by activating the DoubleClick IR-Sensor twice. As a result, unintentional ignition or ignition due to dropping or falling objects is virtually impossible, increasing safety considerably.

## Top-off-the-Line safety

In addition to the ignition and flame control function and the overheating protection, the Safety Control System SCS® also features continuous burner head control (BHC). BHC unfaillingly detects burner head clogging by liquids or solid substances and ensures the correct assembly of the burner head. Exceptional passive safety features: After prolonged use, the residual heat display will signal that the burner head is still hot in order to protect the user from burns.

## The range of delivery:

### gasprofi 1<sup>SCS</sup> school edition micro

Art.-No. 6.007.000

with button function  
2 standard programs for button (function knob)  
and foot pedal  
Safety Control System (SCS)  
Stainless steel foot pedal optional: **Art.-No. 6.000.402**

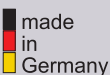
### gasprofi 1<sup>SCS</sup> micro

Art.-No. 6.004.000

with DoubleClick IR-Sensor, button function  
and stainless steel foot pedal  
5 standard programs for IR-Sensor,  
button (function knob) and foot pedal  
Adjustable IR-Sensor reaction distance  
Safety Control System (SCS)  
with Burner Head Control (BHC) and residual heat display  
Holding device for 3 inoculation loop holders

#### Range of delivery for both models:

Removable and decomposable burner head  
Tilt mechanism, right / left  
Nozzles for natural gas, propane / butane gas  
Turbo flame  
Wrench 17 mm for gas connection  
Screwdriver for burner head and cover of burner shaft  
Tubing connector with swivel nut  
Switching power supply (global, level 6)  
Instruction manual and 2-year warranty



## Technical Data:

### Programs

Button: Start-Stop with timer, 60 min  
Foot pedal: Standard (flame during pressed foot pedal)  
Start-Stop with timer, 60 min<sup>1</sup>  
IR Sensor<sup>1</sup>: Start-Stop with timer, 60 min  
Auto-Off with learn function, 1 sec - 60 min

### Safety features

Safety Control System (SCS)  
with gas safety cut off: ignition and flame control  
temperature monitor  
automatic unit switch off, 10 min / 4 h  
burner head clogging  
and assembly monitor  
indicates a hot burner head

### Burner Head Control (BHC)<sup>1</sup>:

### Residual heat display<sup>1</sup>:

### Gas supply and consumption

Gas connection: 1/4" left with gas filter  
natural gas E/LL, 18 - 25 mbar,  
liquid gas, 47,5 - 57,5 mbar, I<sub>2</sub>ELL3B/P  
Gas types: 95 l/h natural gas (LL), 70 g/h liquid gas  
Connected load: *Campingaz*: CV 360 - 40 min, C 206 - 170 min,  
CV 300 - 200 min, CP 250 - 210 min,  
CV 470 - 370 min, CG 1750 - 150 min  
Continuous cartridge operation: *Guilbert*: Express 444 / 445 - 50 min  
*Coleman*: C 250 - 160 min, C 500 - 320 min

### Temperatures

Flame temperature: 1350 °C on liquid gas  
1300 °C on natural gas (E)  
Temperature threshold level: 1.0 kW liquid gas, 1.0 kW natural gas

### Electrical

Power consumption: 2 VA (Stand-by max 0.1 VA)  
Switching power supply: 100-240V / 50/60Hz / max. 0.3A; 9V DC / 1.3 A  
Level 6 (Stand-by Verbrauch max. 0.1 W)  
IR-Sensor coverage<sup>1</sup>: 35 - 70 mm, adjustable  
DoubleClick IR-Sensor<sup>1</sup>: time range 1 sec

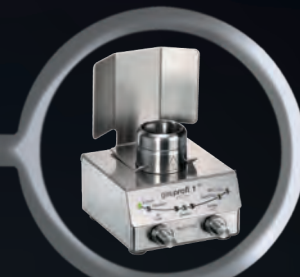
### Mechanical

Casing and operating controls: stainless steel / glass, UV and solvent resistant,  
flame-sterilizable  
removable and decomposable, stainless steel  
Burner head: Ø 23 mm, with drains  
Cover of burner shaft: 85 x 49 x 86 mm  
Measurements (w x h x d): 85 x 49 x 86 mm  
Weight: 700 g

### Licenses

DIN-DVGW Reg.-No.: NG-2211AS0167  
CE: EN 61326-1, EN 61010-1, EN61010-2-010  
EU guidelines: 2014/30/EU, 2014/35/EU & 2011/65/EU

<sup>1</sup> only Gasprofi 1 SCS micro



#### Windshield

made of stainless steel, for a stable  
flame under conditions of strong air flow  
**Art.-No. 8.000.600**



#### Safety adapter

with integrated pressure regulator  
for gas cartridges **CV 360**  
**Art.-No. 8.000.700**  
for gas cartridges **Express 444**  
**Art.-No. 6.000.750**



#### Autoloop Pro

The fully automatic carousel for flame  
sterilizing inoculation loops  
**Art.-No. 6.000.400**

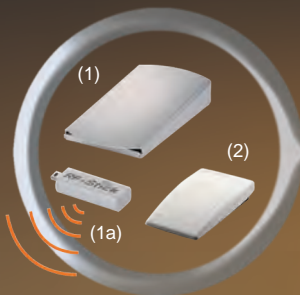


**External DoubleClick IR-Sensor**  
touch-free flame activation, made of  
stainless steel, cable length 0.4 m  
**Art.-No. 6.000.406**



#### Spray protector

for more safety when handling with  
pathogenic material  
**Art.-No. 6.000.200**



#### (1) Foot pedal

made of stainless steel, cable length 3.0 m  
**Art.-No. 6.000.402**

**(1+1a) Foot pedal radio set RF Stick**  
(available in EU countries only)  
**Art.-No. 8.000.404-RF**

#### (2) Foot pedal Mini

made of plastic, cable length 3.0 m  
**Art.-No. 6.000.403**



#### Burner head

double length for better  
heating of Erlenmeyer flasks,  
decomposable and autoclavable  
**Art.-No. 8.100.091**

**Additional accessories available**  
(see accessory brochure)

**WLD-TEC** GmbH

#### Sales Department:

Spandauer Weg 1  
D-37085 Göttingen  
Phone: +49 (0)551 / 793789  
Fax: +49 (0)551 / 793707

#### Production & Service:

Halle-Kasseler-Straße 49  
D-37318 Arenshausen  
Phone: +49 (0)36081 / 68940  
Fax: +49 (0)36081 / 68942

Email: [sales@wld-tec.com](mailto:sales@wld-tec.com) • Internet: <http://www.wld-tec.com>