

MICROLITRE CENTRIFUGES

MIKRO 220 | 220 R

FAST AND FLEXIBLE

The MIKRO 220 spins at an unmatched speed of 18,000 RPM and delivers an RCF of 31,514 in just 26 seconds. Ultimate flexibility is provided by a choice of 7 different rotors from 0.2 ml micro-liter tubes to 50 ml conical tubes, allowing for numerous research applications on a single machine.

This unit is available with refrigeration and a temperature range from -20 °C to +40 °C (MIKRO 220 R).



HIGHLIGHTS

- RPM: 500 - 18,000 min⁻¹
Adjustable in increments of 10
- max. RCF: 31,514
- max. capacity: 60 x 2.0 ml
- Compact, high-performance microlitre centrifuge
- Choice of 8 rotors
- IVDR-conform according to regulation (EU) 2017/746
- impulse key for short cycle mode
- easy operation with keypad and control knob
- impulse key for short cycle mode
- 9 program memories for more individuality
- 9 individual acceleration and deceleration stages
- model 220 R coolable from -20 to +40 °C with pre-cooling function

FEATURES

- metal housing and lid
- viewing port in the lid
- powered lid lock
- lid dropping protection
- emergency lid lock release
- stainless steel chamber
- automatic rotor recognition
- brushless drive
- error display
- imbalance switch-off
- backlit panel with actual values of all parameters
- auditory message after completion of the centrifugation run

TECHNICAL DATA


	MIKRO 220 non-refrigerated	MIKRO 220 R refrigerated
voltage *)	200 – 240 V 1 ~	200 – 240 V 1 ~
frequency	50 – 60 Hz	50 Hz
consumption	510 VA	850 VA
emission, immunity	EN/IEC 61326-1, class B	EN/IEC 61326-1, class B
max. capacity	48 x 1.5 / 2.0 ml, 6 x 50 ml	48 x 1.5 / 2.0 ml, 6 x 50 ml
max. RPM	18,000 min ⁻¹	18,000 min ⁻¹
max. RCF	31,514	31,514
running time	1 – 99 min: 59 s, ∞ continuous run, short cycle mode (impulse button)	1 – 99 min: 59 s, ∞ continuous run, short cycle mode (impulse button)
dimensions (WxDxH)	330x420x313 mm	335x650x313 mm
weight	approx. 21 kg	approx. 42 kg
noise level	≤ 58 dB (A) with rotor 1189-A	≤ 59 dB (A) with rotor 1016
temperatur control, infinitely variable	-	from -20 to +40 °C
Cat. No.	2200	2205
100 – 127 V 1 ~ / 60 Hz	2200-01	2205-01
consumption	510 VA	950 VA
emission, immunity	FCC class B	FCC class B

*) Other voltages on request.

AVAILABLE ROTORS

SWING-OUT ROTORS	angle	max. RPM	max. capacity	Cat. No.	page
Swing-out rotor, 24-place	90°	13,000 min ⁻¹	24 x 2 ml	1154-L	4
ANGLE ROTOR					
Angle rotor, 24-place	45°	18,000 min ⁻¹	24 x 2 ml	1195-A	3
Angle rotor, 30-place	45°	14,000 min ⁻¹	30 x 2 ml	1189-A	3
Angle rotor, 48-place	45°	14,000 min ⁻¹	48 x 2 ml	1158-L	4
Angle rotor, 6-place	45°	6,000 min ⁻¹	6 x 50 ml	1016	5
Drum rotor, 6-place	90°	13,000 min ⁻¹	60 x 2 ml	1161	5
Angle rotor, 12-place	35°	6,000 min ⁻¹	12 x 15 ml	1015	6
Angle rotor, 6-place	45°	14,000 min ⁻¹	6 x PCR strips	1160	6


— ANGLE ROTOR, 24-PLACE | 1195-A



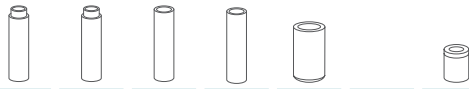
Rotor	
max. RPM max. RCF	18,000 min ⁻¹ 31,514
max. capacity	24 x 2 ml
run-up run-down, braked in sec	26 23
angle	45°
temperature in °C ¹⁾	+3
Cat. No.	1195-A



Lid bioseal ⁵⁾	
Cat. No.	INCLUSIVE





Vessels							
capacity in ml	0.2	0.4	0.5	0.8	1.5	2.0	0.5
Ø x L in mm	6 x 18	6 x 45	8 x 30	8 x 45	11 x 38	11 x 38	10.7 x 46
max. RCF ²⁾	31,514	31,514	31,514	31,514	31,514	31,514	30,065
radius in mm	87	87	87	87	87	87	83
Cat. No.	microliter tubes						Pediatric

Adapter							
boring Ø x L in mm	6 x 40	6 x 40	8 x 40	8 x 40	10.2x19.3	11.2x40.8	11.2x39
vessels per rotor	24	24	24	24	24	24	12
Cat. No.	2024	2024	2023	2023	2031⁷⁾	-	0788

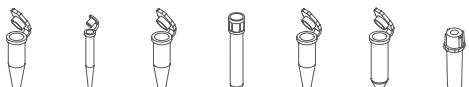
— ANGLE ROTOR, 30-PLACE | 1189-A



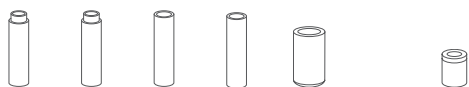
Rotor	
max. RPM max. RCF	14,000 min ⁻¹ 21,255
max. capacity	30 x 2 ml
run-up run-down, braked in sec	20 22
angle max. noise level	45° 58 dB (A)
temperature in °C ¹⁾	+3
Cat. No.	1189-A



Lid bioseal ⁵⁾	
Cat. No.	INCLUSIVE

Vessels							
capacity in ml	0.2	0.4	0.5	0.8	1.5	2.0	0.5
Ø x L in mm	6 x 18	6 x 45	8 x 30	8 x 45	11 x 38	11 x 38	10.7 x 46
max. RCF ²⁾	21,255	21,255	21,255	21,255	21,255	21,255	20,379
radius in mm	97	97	97	97	97	97	93
Cat. No.	microliter tubes						Pediatric

Adapter							
boring Ø x L in mm	6 x 40	6 x 40	8 x 40	8 x 40	10.2x19.3	11.2x40.9	11.2x39
vessels per rotor	30	30	30	30	30	30	15
Cat. No.	2024	2024	2023	2023	2031⁷⁾	-	0788

- 1) For cooled versions: Lowest temperature achievable with precooling and max. speed.
- 2) Please note that the RCF values indicated refer only to rotor performance. The max. permissible RCF of tubes used should be verified with the individual manufacturers.
- 5) Tested by the TÜV in conformity with DIN EN 61010, section 2 - 020.
- 7) For centrifugation at high speeds, we recommend to use conical, phenol-resistant adapters. Cat. No. 2031.

— ANGLE ROTOR, 48-PLACE | 1158-L



Rotor	
max. RPM	14,000 min ⁻¹
max. RCF	21,255 outside / 18,845 inside
max. capacity	48 x 2 ml
run-up run-down, braked in sec	21 22
angle max. noise level	45° 59 dB (A)
temperature in °C ¹⁾	-4
Cat. No.	1158-L



Lid bioseal ⁵⁾	
Cat. No.	INCLUSIVE



Vessels							
capacity in ml		0.2	0.4	0.5	0.8	1.5	2.0
Ø x L in mm		6 x 18	6 x 45	8 x 30	8 x 45	11 x 38	11 x 38
max. RCF ²⁾	outside / inside	21,255 / 18,845	21,255 / 18,845	21,255 / 18,845	21,255 / 18,845	21,255 / 18,845	21,255 / 18,845
radius in mm	outside / inside	97 / 86	97 / 86	97 / 86	97 / 86	97 / 86	97 / 86
Cat. No.		microliter tubes					



Adapter							
boring Ø x L in mm		6 x 40	6 x 40	8 x 40	8 x 40	10.2x19.3	11.4x39
vessels per rotor		48	48	48	48	48	48
Cat. No.		2024	2024	2023	2023	2031⁷⁾	-

— SWING-OUT ROTOR, 24-PLACE | 1154-L



Rotor	
max. RPM max. RCF	13,000 min ⁻¹ 18,516
max. capacity	24 x 2 ml
run-up run-down, braked in sec	25 26
angle max. noise level	90° 60 dB (A)
temperature in °C ¹⁾	-2
Cat. No.	1154-L



Lid bioseal ⁵⁾	
Cat. No.	INCLUSIVE



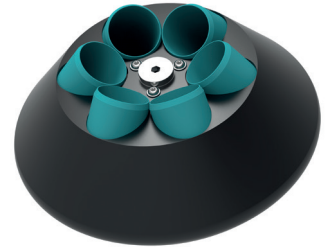
Vessels							
capacity in ml		0.2	0.4	0.5	0.8	1.5	2.0
Ø x L in mm		6 x 18	6 x 45	8 x 30	8 x 45	11 x 38	11 x 38
max. RCF ²⁾		18,516	18,516	18,516	18,516	18,516	18,516
radius in mm		98	98	98	98	98	98
Cat. No.		microliter tubes					



Adapter							
boring Ø x L in mm		6 x 40	6 x 40	8 x 40	8 x 40	10.2x19.3	11.5x38.5
vessels per rotor		24	24	24	24	24	24
Cat. No.		2024	2024	2023	2023	2031⁷⁾	-

- 1) For cooled versions: Lowest temperature achievable with precooling and max. speed.
- 2) Please note that the RCF values indicated refer only to rotor performance. The max. permissible RCF of tubes used should be verified with the individual manufacturers.
- 5) Tested by the TÜV in conformity with DIN EN 61010, section 2 - 020.
- 7) For centrifugation at high speeds, we recommend to use conical, phenol-resistant adapters. Cat. No. 2031.

— ANGLE ROTOR, 6-PLACE | 1016

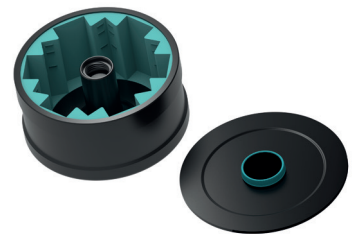


Rotor	
max. RPM max. RCF	6,000 min ⁻¹ 4,025
max. capacity	6 x 50 ml
run-up run-down, braked in sec	14 17
angle max. noise level	35° 59 dB (A)
temperature in °C ¹⁾	-20
Cat. No.	1016

Vessels													
capacity in ml	7	15	25	50	9-10	10	1.6-5	4-7	5	15	50	30	50
Ø x L in mm	12x100	17x100	24x100	34x100	16x92	15x102	13 x 75	13 x 100	17x59	17x120	29x115	26x95	29x107
max. RCF ²⁾	3,944	3,783	3,622	4,025	3,783	3,783	2,978	3,783	3,622	3,824	3,824	3,703	3,904
radius in mm	98	94	90	100	94	94	74	94	90	95	95	92	97
Cat. No.	tubes²⁾				blood collection / urine tubes				-	tubes with screw cap			

Adapter													
boring Ø x L in mm	13 x 91.5	17.5 x 95	26 x 88	35x96	17.5x95	17.5x51	17.5 x 95	17.5 x 95	17x51	17x97.8	30x97.8	26x88	29x95
vessels per rotor	18	6	6	6	6	6	6	6	6	6	3	6	6
Cat. No.	1632	1635	1633	-	1635	1635	1635	1635	1649	1631	1641	1633	1634

— DRUM ROTOR, 6-PLACE | 1161



Rotor	
max. RPM max. RCF	13,000 min ⁻¹ 14,171
max. capacity	60 x 2 ml
run-up run-down, braked in sec	17 18
angle max. noise level	90° 60 dB (A)
temperature in °C ¹⁾	-3
Cat. No.	1161

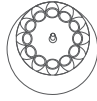
+ Lid **Cat. No.** **INCLUSIVE**

Vessels						
capacity in ml	0.2	0.4	0.5	0.8	1.5	2.0
Ø x L in mm	6x18	6 x 45	8 x 30	8x45	11x38	11x38
max. RCF ²⁾	14,171	14,171	14,171	14,171	14,171	14,171
radius in mm	75	75	75	75	75	75
Cat. No.	microliter tubes					

Adapter						
boring Ø x L in mm	6 x 40	6 x 40	8.4 x 42.5	8.4 x 42.5	10.8 x 37	10.8 x 37
vessels per rotor	192	192	126	126	60	60
Cat. No.	1378	1378	1379	1379	1377	1377

- 1) For cooled versions: Lowest temperature achievable with precooling and max. speed.
- 2) Please note that the RCF values indicated refer only to rotor performance. The max. permissible RCF of tubes used should be verified with the individual manufacturers.

— ANGLE ROTOR, 12-PLACE | 1015



Rotor	
max. RPM max. RCF	6,000 min ⁻¹ 4,146
max. capacity	12 x 15 ml
run-up run-down, braked in sec	14 16
angle max. noise level	35° 60 dB (A)
temperature in °C ¹⁾	-20
Cat. No.	1015

Vessels															
capacity in ml		5	15	1.1-1.4	2.6-3.4	2.7-3	4.5-5	4.9	7.5-8.2	9-10	10	1.6-5	4-7	8.5-10	15
Ø x L in mm		12x75	17x100	8x66	13x65	11x66	11x92	13x90	15x92	16x92	15x102	13x75	13x100	16x100	17x120
max. RCF ²⁾		3,300	4,146	3,300	3,300	3,300	4,146	4,146	4,146	4,146	4,146	3,300	4,146	4,146	4,146
radius in mm		82	103	82	82	82	103	103	103	103	103	82	103	103	103
Cat. No.		tubes²⁾		blood collection / urine tubes										-	

Adapter															
boring Ø x L in mm		13.5 x 59	17.7 x 88	13.5 x 59	13.5 x 59	13.5 x 59	17.7 x 88	17.7 x 88	17.7 x 88	17.7 x 88	17.7 x 88	13.5 x 59	13.5 x 79	17.7 x 88	17.7 x 88
vessels per rotor		12	12	12	12	12	12	12	12	12	12	12	12	12	6
Cat. No.		1054-A	-	1054-A	1054-A	1054-A	-	-	-	-	-	1054-A	1058	-	-

— ANGLE ROTOR, 6-PLACE | 1160



Rotor	
max. RPM max. RCF	14,000 min ⁻¹ 18,845
max. capacity	6 x 8 PCR strips
run up run down, braked in sec	20 22
angle temperature in °C ¹⁾	45° -4
Cat. No.	1160

+ **Lid**
Cat. No. **1162**

Vessels			
capacity in ml		0.2	0.2
Ø x L in mm		6x18	-
max. RCF ²⁾		18,845	18,845
radius in mm		86	86
Cat. No.		-	PCR strips

Adapter			
boring Ø x L in mm		6.5 x 15.5	6.5 x 15.5
vessels per rotor		48	6 x 8
Cat. No.		-	-

- 1) For cooled versions: Lowest temperature achievable with precooling and max. speed.
- 2) Please note that the RCF values indicated refer only to rotor performance. The max. permissible RCF of tubes used should be verified with the individual manufacturers.

CERTIFICATIONS / REGISTRATIONS

Product certification:



Product registration:

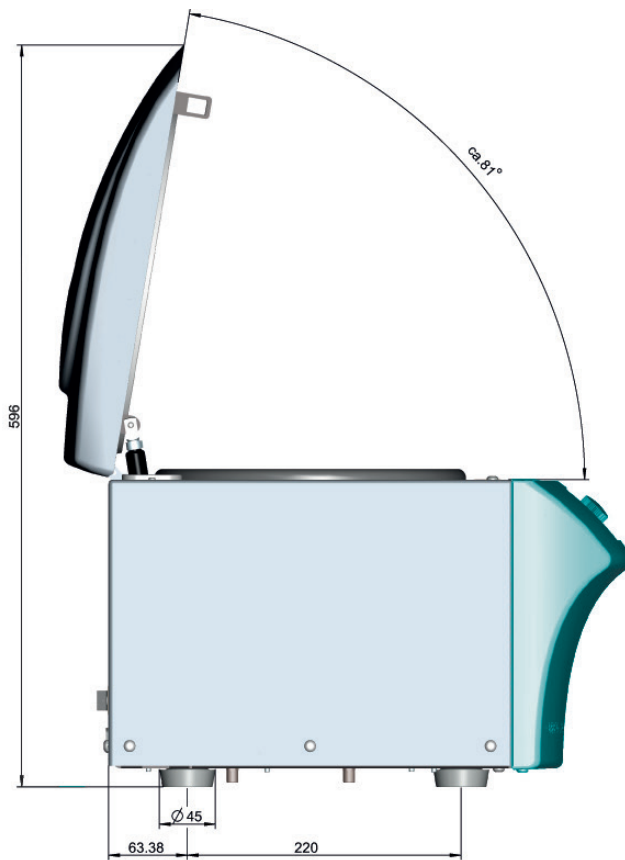


according to regulation (EU) 2017/746

Company certifications:



DIMENSIONS – MIKRO 220



— DIMENSIONS – MIKRO 220 R

