

Elmasonic Accessories - Holders and Product Carriers

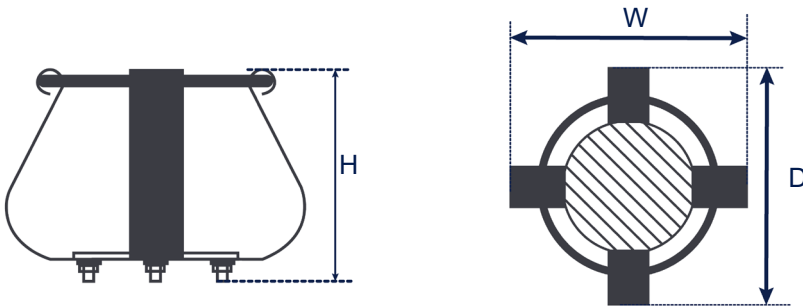
Holding clamps for Erlenmeyer flasks

- made of stainless steel
- for mounting on the bottom of a Elma cleaning basket
- the Erlenmeyer flask has a firm hold in the holding clamp due to the curved spring



	50 ml	250 ml	500 ml	1000 ml
Order number	1007553	1007555	1007557	1007558
Ext. dimensions W / D / H (mm)	55 / 55 / 50	90 / 90 / 70	110 / 110 / 85	135 / 135 / 85

Dimension definition



The drawings are meant as a visualization aid and are not true to scale.

Technical specifications serve as orientation values and are subject to tolerances due to production and manufacturing. Proper operation can only be guaranteed when using original Elma accessories.

Elmasonic Accessories - Holders and Product Carriers

Holding clamps for Erlenmeyer flasks

Number of Erlenmeyer- / shaking flasks with and without holding clamp in the Elma cleaning baskets

Erlenmeyer- / shaking flasks - without holder

Passend für Gerätegröße	30	40	60	80	100	120	150	180	300
50 ml (Ø 50 mm)	6 x	6 x	9 x	16 x	16 x	16 x	40 x	25 x	40 x
250 ml (Ø 85 mm)	2 x	2 x	3 x	5 x	6 x	6 x	15 x	9 x	15 x
500 ml (Ø 105 mm)	1 x	1 x	2 x	4 x	3 x	3 x	8 x	5 x	8 x
1000 ml (Ø 131 mm)	--	--	--	--	2 x	2 x	5 x	3 x	5 x

Erlenmeyer- / shaking flasks - with holder

Passend für Gerätegröße	30	40	60	80	100	120	150	180	300
50 ml (Ø 55 mm)	6 x	5 x	8 x	15 x	14 x	12 x	38 x	20 x	38 x
250 ml (Ø 90 mm)	2 x	2 x	3 x	5 x	5 x	5 x	14 x	8 x	14 x
500 ml (Ø 110 mm)	--	--	2 x	--	3 x	2 x	8 x	5 x	8 x
1000 ml (Ø 135 mm)	--	--	--	--	2 x	1 x	5 x	3 x	5 x

Lab bottles (Duran / Schott)

Passend für Gerätegröße	30	40	60	80	100	120	150	180	300
50 ml (Ø 46 mm)	6 x	6 x	9 x	16 x	16 x	16 x	40 x	25 x	40 x
250 ml (Ø 70 mm)	2 x	2 x	4 x	7 x	9 x	9 x	18 x	12 x	18 x
500 ml (Ø 86 mm)	2 x	2 x	3 x	5 x	6 x	5 x	14 x	8 x	14 x
1000 ml (Ø 101 mm)	1 x	1 x	2 x	4 x	4 x	3 x	9 x	5 x	9 x

Elmasonic Accessories - Holders and Product Carriers

Holding clamps for Erlenmeyer flasks

Example of application



The parts shown are for illustration purposes only and are not included in the scope of delivery.

Technical specifications serve as orientation values and are subject to tolerances due to production and manufacturing. Proper operation can only be guaranteed when using original Elma devices.